



COATED METALS GROUP

Bozeman, MT
(406) 316-3201

Charlotte, NC
(704) 672-5325

Denver, CO
(303) 623-5333

Indianapolis, IN
(317) 890-1999

Madison, WI
(608) 826-5000

Minneapolis, MN
(763) 561-5000

Nashville, TN
(615) 712-6525



Phoenix, AZ
(602) 254-7700

Salt Lake City, UT
(801) 590-9992

WWW.CMGMETALS.COM



COATED METALS GROUP

WWW.CMGMETALS.COM

STANDARD COLOR CHART

Cool coatings with premium heat-reflective technology from Dura Coat.

Durapon 70™ Full Strength 70% PVDF and Dura Coat XT40S™ Siliconized Polyester (SMP) Pre-Finished Steel Flat Sheets & Coil.

* Metallic Color

** Premium Finish



Deep Black



Matte Black



Charcoal Gray



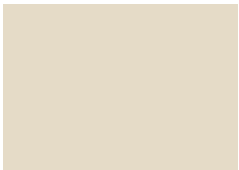
Musket Gray



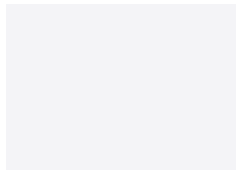
Slate Gray



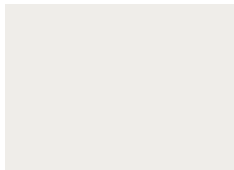
Ash Gray



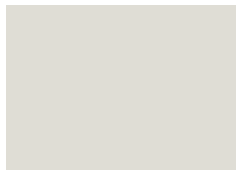
Almond



Bright White



Bone White



Stone White



Cityscape



Pebble Clay



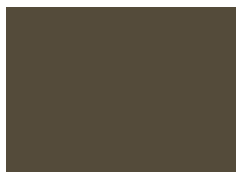
Sandstone



Sierra Tan



Antique Ivory



Medium Bronze



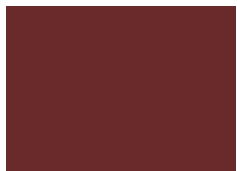
Dark Bronze



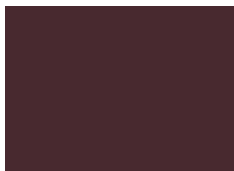
Extra Dark Bronze



Regal Red



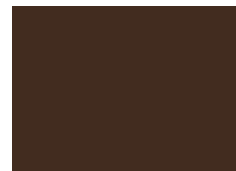
Colonial Red



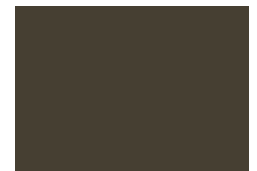
Burgundy



Terra Cotta



Mansard Brown



Burnished Slate



Hartford Green



Classic Green



Hemlock Green



Teal



Slate Blue



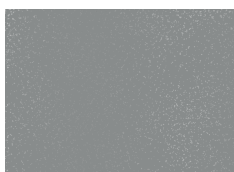
Royal Blue



Galvalume Plus



*Copper Penny



*Weathered Zinc



*Silver Metallic



*Champagne



*Aged Copper



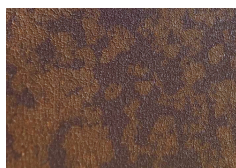
** Black Ore



** Vintage



** Western Rust



** Rustic Rawhide

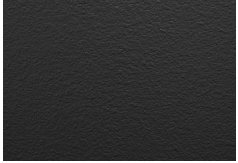


** Custom Color

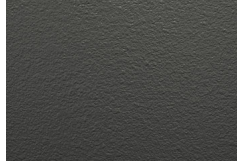
TEX3D SMP Finishes

Cool coatings with premium heat-reflective technology and tactile textured finish from Dura Coat.
Dura Coat XT40S™ Siliconized Polyester (SMP) Pre-Finished Steel Flat Sheets & Coil.

* Metallic Color
** Premium Finish



Matte Black



Charcoal Gray



Musket Gray



Slate Gray



Dark Bronze



Burnished Slate



Mansard Brown



Burgundy



Colonial Red



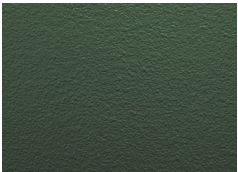
Terra Cotta



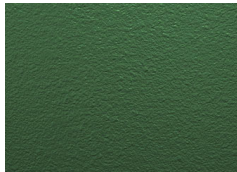
Sierra Tan



Medium Bronze



Hartford Green



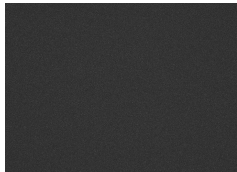
Classic Green

Ultra Low Gloss PVDF Finishes

Cool coatings with premium heat-reflective technology and Ultra-Low Gloss, Low-Sheen technology from Dura Coat.
Dura Coat Durapon 70™ Full-Strength 70% PVDF Pre-Finished Steel Flat Sheets & Coil



Deep Black



Carbon



Charcoal Gray



Slate Gray



Dark Bronze



Burnished Slate



Iron Ore

Metal samples and additional custom colors are available upon request. Please refer to the Stock Availability matrix for gauge, width, and paint finish availability.

Oil canning is an inherent part of light gauge cold-formed metal products and is not cause for coil, sheet, or panel rejection. Protective film must be removed immediately after installation. Color and sizes can change without notice. Additional sizes, gauges, and colors may be available, please contact your local sales representative

Colors represented on this electronic chart may not exactly match actual material. All colors should be verified using actual metal samples. Mismatch of electronic representations and actual material shall not be accepted as cause for rejection. Many finishes are production batch-specific and may result in slight variations in visual match. Do not mix or use materials purchased from separate sales orders on individual projects. Visual variation between separate order batches used on individual projects shall not constitute cause for rejection or claim.





COATED METALS GROUP

WWW.CMGMETALS.COM

| Color Name | ULTRA-COOL RATINGS | | | 22 ga. | 24 ga. | | 24 ga. ULG | | 26 ga. | | 26 ga. TEX3D | | 28 ga. |
|--------------------------|--------------------|-------|-----|--------|--------|-----|------------|-----|--------|-----|--------------|-----|--------|
| | Reflect | Emiss | SRI | 48" | 40" | 48" | 40" | 48" | 40" | 48" | 40" | 48" | 42" |
| Acrylic Coated Galvalume | N/A | N/A | N/A | • | • | • | | | • | • | | | • |
| Aged Copper | 26.80% | 0.85 | 26 | | • | • | | | | | | | |
| Almond | 61.40% | 0.83 | 72 | • | • | • | | | | • | | | • |
| Antique Ivory | N/A | N/A | N/A | | | | | | | • | | | • |
| Ash Gray | 49.80% | 0.85 | 56 | | | • | | | | • | | | |
| Black Ore | 8.00% | 0.9 | 4 | | • | • | | | | | | | |
| Bone White | 67.60% | 0.84 | 81 | • | • | • | | | | • | | | • |
| Bright White | 67.80% | 0.84 | 81 | | | • | | | | • | | | |
| Burgundy | 27.10% | 0.85 | 26 | | • | • | | | • | • | • | • | |
| Burnished Slate | 25.10% | 0.83 | 33 | | • | • | • | • | • | • | • | • | |
| Carbon | 5.80% | 0.85 | 0 | | | | • | • | | | | | |
| Champagne | 47.20% | 0.8 | 51 | | | • | | | | | | | |
| Charcoal Gray | 25.30% | 0.84 | 23 | • | • | • | • | • | • | • | • | • | • |
| Cityscape | 45.20% | 0.87 | 51 | | • | • | | | | | | | |
| Classic Green | 30.50% | 0.85 | 30 | | • | • | | | • | • | • | • | • |
| Colonial Red | 33.20% | 0.86 | 35 | | • | • | | | • | • | • | • | • |
| Copper Penny | 43.90% | 0.84 | 48 | | • | • | | | | • | | | |
| Dark Bronze | 27.70% | 0.85 | 27 | • | • | • | • | • | • | • | • | • | • |
| Deep Black | 26.70% | 0.84 | 25 | • | • | • | • | • | • | • | | | • |
| Extra Dark Bronze | N/A | 0.88 | -2 | | • | • | | | | | | | |
| Hartford Green | 27.10% | 0.83 | 25 | • | • | • | | | • | • | • | • | • |
| Hemlock Green | 31.10% | 0.85 | 31 | | • | • | | | | | | | |
| Iron Ore | 26.90% | 0.85 | 26 | | | | • | • | | | | | |
| Mansard Brown | 26.00% | 0.85 | 25 | • | • | • | | | • | • | • | • | • |
| Matte Black | 26.80% | 0.84 | 25 | • | • | • | | | • | • | • | • | • |
| Medium Bronze | 30.90% | 0.86 | 31 | • | • | • | | | • | • | • | • | • |
| Musket Gray | 34.80% | 0.83 | 35 | | • | • | | | • | • | • | • | |
| Pebble Clay | 43.40% | 0.84 | 47 | | | | | | | • | | | • |
| Regal Red | 38.50% | 0.85 | 41 | | | • | | | | • | | | |
| Royal Blue | 26.80% | 0.85 | 26 | | • | • | | | | • | | | |
| Rustic Rawhide | 31.00% | 0.88 | 32 | | | • | | | | | | | |
| Sandstone | 59.70% | 0.82 | 69 | • | | • | | | | | | | |
| Sierra Tan | 45.80% | 0.83 | 50 | • | • | • | | | | • | • | • | • |
| Silver | 55.60% | 0.81 | 63 | | • | • | | | | | | | |
| Slate Blue | 32.80% | 0.84 | 33 | | • | • | | | | • | | | |
| Slate Gray | 37.50% | 0.82 | 38 | • | • | • | • | • | • | • | • | • | • |
| Stone White | 65.60% | 0.82 | 77 | | | • | | | | | | | |
| Teal | 27.90% | 0.85 | 27 | | • | • | | | | | | | |
| Terra Cotta | 41.90% | 0.83 | 45 | | | • | | | | • | • | • | |
| Vintage | 30.00% | 0.7 | 22 | | • | • | | | | | | | |
| Weathered Zinc | 38.30% | 0.85 | 41 | | • | • | | | | | | | |
| Western Rust | 24.00% | 0.87 | 23 | | • | • | | | | | | | |

